



OPEN ACCESS

EDITED AND REVIEWED BY
Atsushi Ishii,
University of Arizona, United States

*CORRESPONDENCE
Zhanhang Wang
✉ kedafu2005@sina.com
Sheng Luo
✉ shengluo@189.cn

[†]These authors have contributed equally to this work

RECEIVED 06 November 2025
ACCEPTED 24 November 2025
PUBLISHED 01 December 2025

CITATION
Xie S, Kuang Z, Pan M, Zhang K, Ye J, Li B, Luo S and Wang Z (2025) Correction: Generalized tonic-clonic seizures as the initial symptom of late-onset Krabbe disease: a Case Report. *Front. Behav. Neurosci.* 19:1741000. doi: 10.3389/fnbeh.2025.1741000

COPYRIGHT
© 2025 Xie, Kuang, Pan, Zhang, Ye, Li, Luo and Wang. This is an open-access article distributed under the terms of the [Creative Commons Attribution License \(CC BY\)](#). The use, distribution or reproduction in other forums is permitted, provided the original author(s) and the copyright owner(s) are credited and that the original publication in this journal is cited, in accordance with accepted academic practice. No use, distribution or reproduction is permitted which does not comply with these terms.

Correction: Generalized tonic-clonic seizures as the initial symptom of late-onset Krabbe disease: a Case Report

Sifen Xie^{1†}, Zuying Kuang^{1†}, Mengqiu Pan¹, Kanghua Zhang¹, Jinlong Ye¹, Bo Li¹, Sheng Luo^{2*} and Zhanhang Wang^{1*}

¹Department of Neurology, Guangdong Sanjiu Brain Hospital, Guangzhou, China, ²Department of Neurology, Institute of Neuroscience, Key Laboratory of Neurogenetics and Channelopathies of Guangdong Province and the Ministry of Education of China, The Second Affiliated Hospital, Guangzhou Medical University, Guangzhou, China

KEYWORDS

globoid cell leukodystrophy, epilepsy, *GALC* gene, adult-onset, cortical gray matter

A Correction on

Generalized tonic-clonic seizures as the initial symptom of late-onset Krabbe disease: a Case Report

by Xie, S., Kuang, Z., Pan, M., Zhang, K., Ye, J., Li, B., Luo, S., and Wang, Z. (2025). *Front. Behav. Neurosci.* 19:1564676. doi: 10.3389/fnbeh.2025.1564676

In the published article, the wrong image for [Figure 2](#) was erroneously used and was duplicated from the image of Figure 3. The corrected [Figure 2](#) appears below.

The original version of this article has been updated.

Generative AI statement

Any alternative text (alt text) provided alongside figures in this article has been generated by Frontiers with the support of artificial intelligence and reasonable efforts have been made to ensure accuracy, including review by the authors wherever possible. If you identify any issues, please contact us.

Publisher's note

All claims expressed in this article are solely those of the authors and do not necessarily represent those of their affiliated organizations, or those of the publisher, the editors and the reviewers. Any product that may be evaluated in this article, or claim that may be made by its manufacturer, is not guaranteed or endorsed by the publisher.

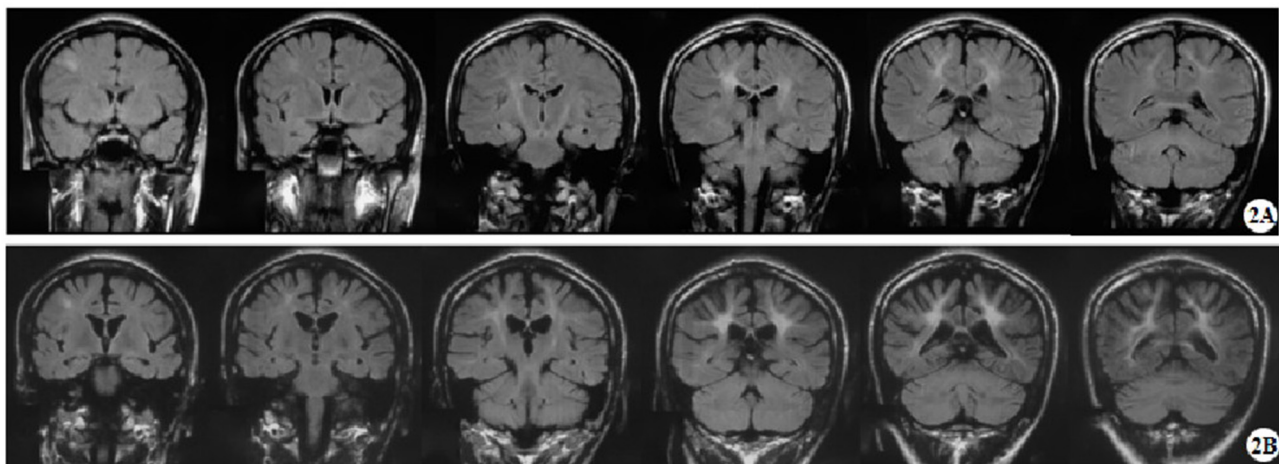


FIGURE 2

Representative brain MRI at the ages of 16 and 26 years (T2 FLAIR, coronal planes). **(A)** Brain MRI at the age of 16 detected symmetrical hyperintensities in the bilateral periventricular white matter and bilateral corticospinal tracts, as well as patchy hyperintensity in the right frontal subcortical region. **(B)** Brain MRI at the age of 26 detected symmetrical lesions in the bilateral corticospinal tracts, optic radiations, splenium of the corpus callosum, bilateral corona radiata, and the centrum semiovale (pre- and postcentral gyri) white matter, along with newly observed diffuse cerebral atrophy.